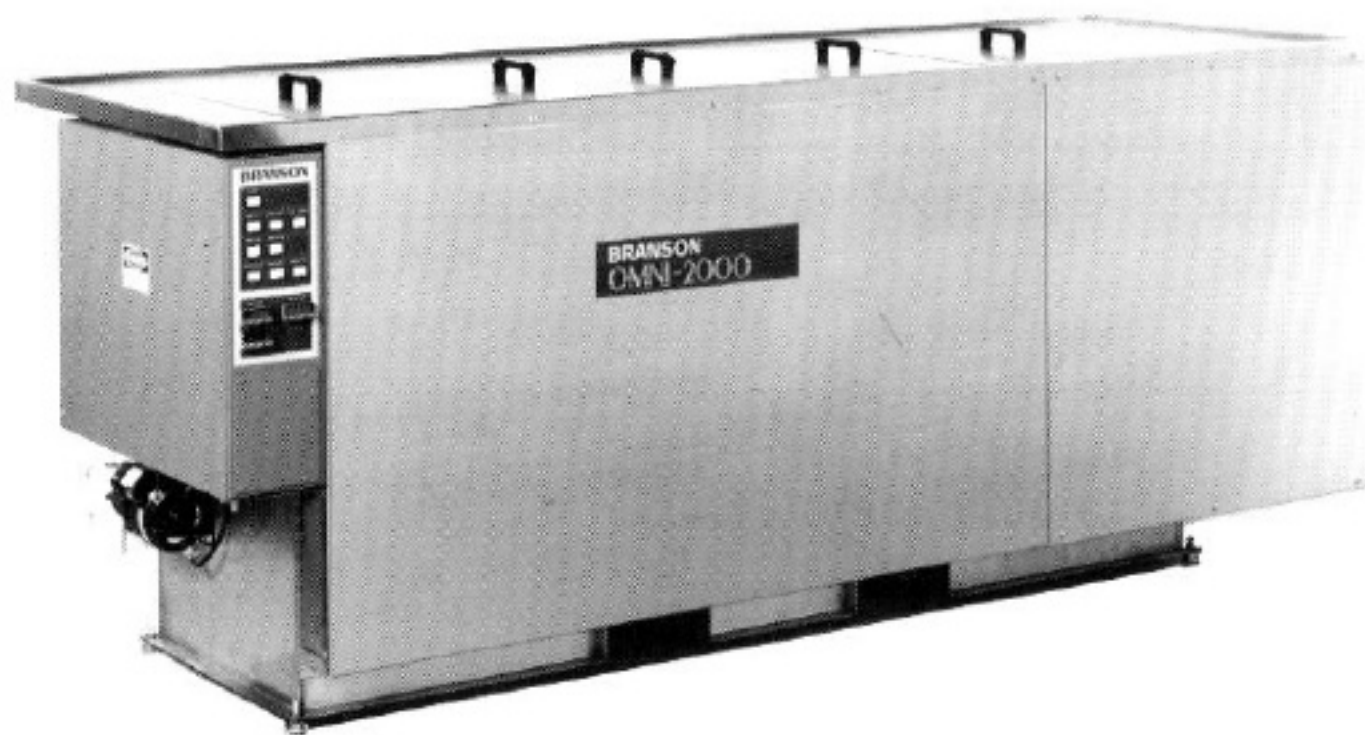


AQUEOUS ULTRASONIC CLEANING SYSTEM



OMNI 2000 CLEANING SYSTEMS

Models 1620 and 1620-RI

The *OMNI 2000* cleaning system by Branson is a fully-configured ultrasonic cleaning and rinsing system with a built-in dryer. Also available, as an option, is a rust inhibitor station in the second rinse tank. The equipment incorporates quality workmanship and materials without including unnecessary extras.

The *OMNI 2000* offers a full range of hard-working features, while occupying only a fraction of the floor space of comparable systems. All controls are mounted in a convenient control box and operate at 24 volts for safety.

CLEANING

Precision cleaning is accomplished in the first process tank. This tank is equipped with Branson industrial 40 or 25 kHz ultrasonic components and thermostatically-controlled heat. A recirculating pump and filter system to continuously remove particulate material is standard.

RINSING

The *OMNI 2000* includes two heated rinse tanks in a cascade arrangement. Rinse water overflows from tank three into tank two. This counter-flowing feature provides excellent rinsing while substantially reducing water consumption. Tank two includes ultrasonic components as standard to assure that all soils and cleaning chemistry are driven from blind holes and crevices before the dry cycle.

RUST INHIBITING OPTION

As an option, the user may choose to use the second rinse tank as a rust inhibitor dip prior to drying. This model, 1620-RI, is useful when cleaning steel components. The valving associated with this system allows easy conversion from a single overflow rinse back to a dual tank cascade rinse in seconds if your process changes.

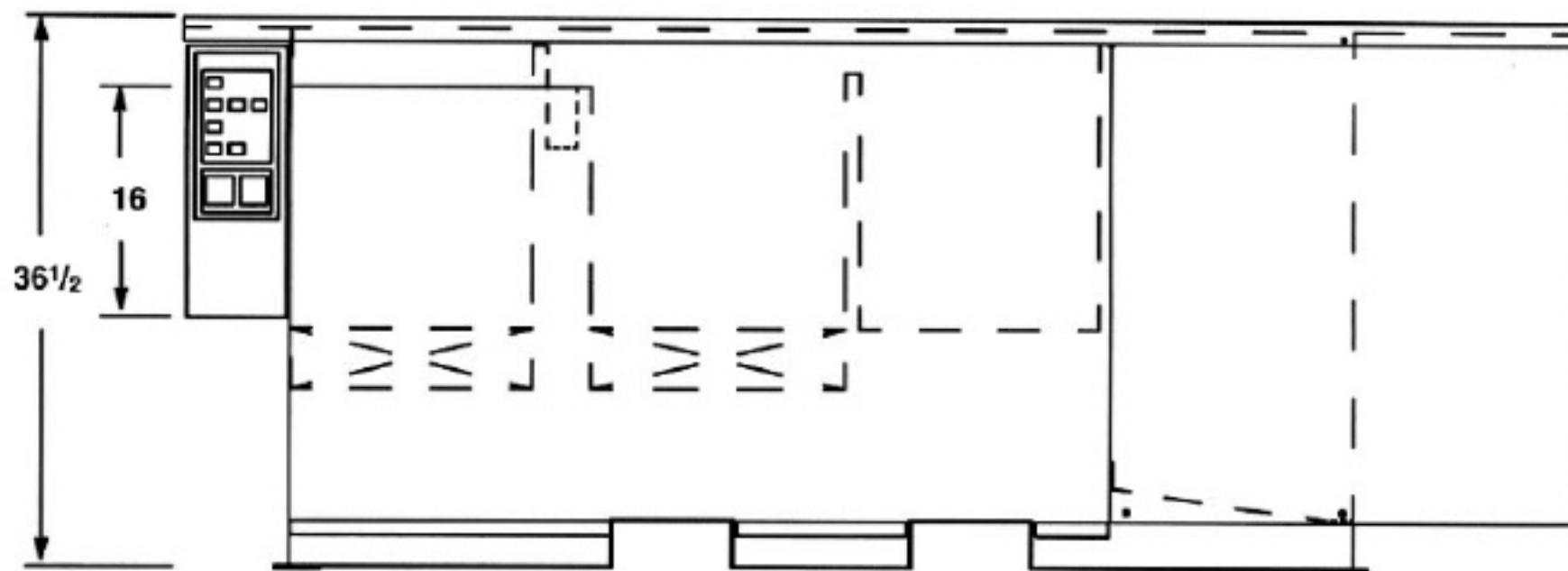
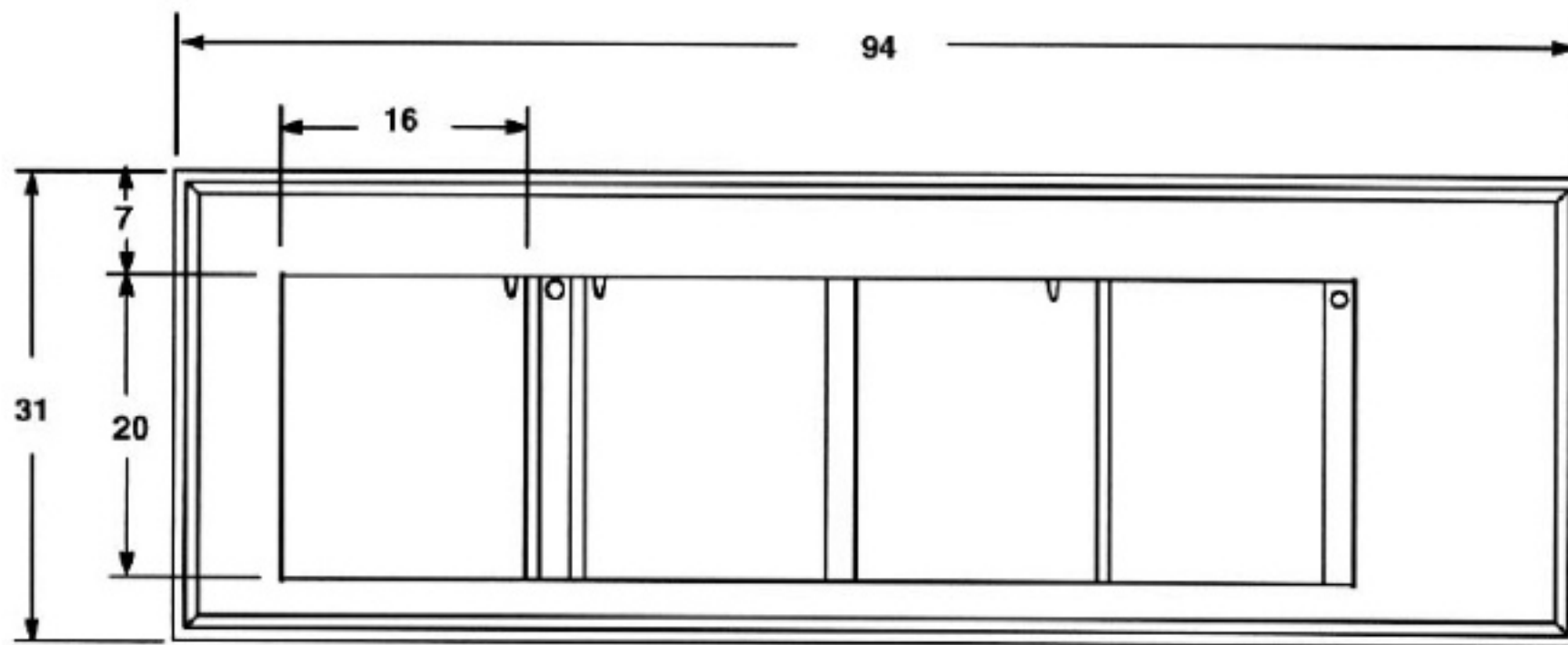
DRYING

The drying station utilizes both elevated temperature and rapid air movement to produce dry parts. The chamber is furnished with a 3" vent duct to facilitate moist air removal.

FEATURES & BENEFITS

- Clean, rinse, and dry in a single unit.
- Small footprint minimizes floor space needs.
- Low voltage controls for safety.
- Standard filtration to extend cleaning bath life.
- Ultrasonics on rinse tank for superior performance.
- Convenient working height.
- Durable stainless steel construction.
- Easy access to routine maintenance components.
- Convenient control panel for easy operation.
- Recessed work surface for fluid spill containment.
- Automation interface port for transport systems (e.g., Branson TDR).
- Rust inhibition option for steel parts.

BASIC DESIGN



Note: Dimensions are in inches.

SPECIFICATIONS

Working tank size:	16"x20"x16" deep
Process tank material:	316L bright annealed
Drain sizes:	3/4" NPT
Cleaning tank temperature:	Ambient to 160°F
Recirculation flow rate:	1-3 GPM
Filter retention:	10 microns
Ultrasonic output:	1000 watts/tank
Dryer heat:	6,000 watts
Dryer airflow:	550 cfm
Dryer temperature:	250°F maximum
Input voltage:	208-240V AC, 35 amps, 3 phase

OPTIONS

- Wash Tank Surface Sparger
- Oil Removal Package (Coalescer, Ultrafiltration)
- DI Water Heater
- DI Water Treatment System
- Automated Material Handling (TDR)
- Rotating Baskets
- Series 8500 Advanced Power Supply
- Hinged Power Cover for Dryer



BRANSON ULTRASONICS CORPORATION

41 Eagle Road, Danbury, CT 06813-1961 • (203) 796-0400 • FAX (203) 796-0535

Branson Precision Cleaning
Nuevo Laredo, Mexico
Branson Southeast Asia
Hong Kong

Branson United Kingdom
London, England
Branson Europe
Dietzenbach-Steinberg, Germany

Branson Japan
Tokyo, Japan
Branson Canada
Markham, Ontario

©Branson Ultrasonics Corporation, 1993 Printed in USA, 6/97